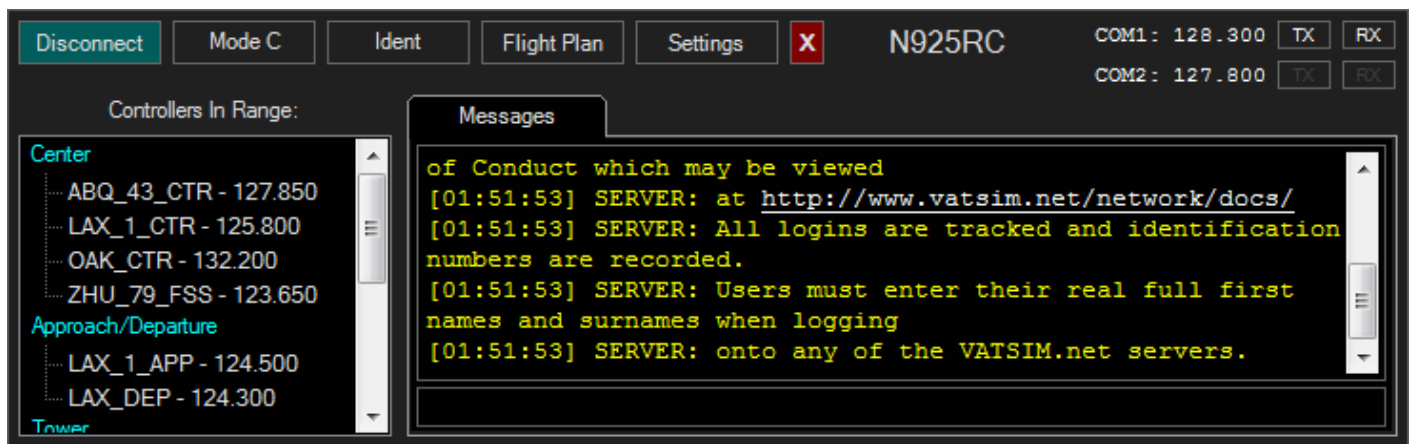


Setting Up Your Pilot Client



Upon initiating your flight simulation session, a crucial first step involves seamlessly integrating into the VATSIM network through your pilot client, such as vPilot or xPilot. This integration is pivotal for engaging with air traffic control (ATC) and ensuring a realistic flight experience. Here's a guide to effectively setting up your pilot client and initiating communication with ATC.

Initial Steps in Your Simulator:

1. **Log into vPilot/xPilot:** Start by logging into your chosen pilot client. This is your gateway to accessing the VATSIM network and its array of online controllers.
2. **Interface Overview:** Upon successful login, you will be presented with an interface that lists available controllers. This interface is intuitive and designed to give you a comprehensive overview of ATC services available in your immediate vicinity.

Establishing Communication with ATC:

The process for identifying which controller to contact depends significantly on the specific airport and its available ATC services. Follow this structured approach to determine the correct point of contact:

1. **Ground Controllers:** Initially, scroll through the list to check for the presence of ground controllers at your location. If available, promptly set your aircraft's radio to the frequency assigned to the ground controller.
2. **Tower Controllers:** In the absence of ground control, your next step should be to look for a tower controller. If a tower controller is listed, adjust your radio frequency accordingly to establish contact.
3. **Approach/Departure Controllers:** If neither ground nor tower controllers are available, the appropriate action is to reach out to approach or departure control. They will guide you in airspace management around the airport.

4. **Center Controllers:** In scenarios where only the center controller is active, it is imperative to communicate with the center. The center controller will provide instructions for your flight across larger sections of airspace.

Summary:

Navigating the ATC communication setup within VATSIM requires a methodical approach, starting with ground control and moving up through tower, approach/departure, and finally, center controllers, based on availability. This structured method ensures that pilots can effectively communicate with ATC, fostering a realistic and immersive flight simulation experience. Remember, clear and proper communication with ATC enhances safety and efficiency, making your VATSIM experience more enjoyable and authentic.

Revision #1

Created 1 March 2024 20:48:42 by UAL3 Zac P. | CTO

Updated 1 March 2024 20:50:51 by UAL3 Zac P. | CTO